

CASE STUDY

Knowledge exchange at EBRI



Giulia Lotti, an Italian research fellow at the University of Florence, working at RE-CORD (Renewable Energy Consortium for Research and Demonstration) laboratories, reviews her recent experience of Transnational Access through BRISK.



Figure 1: Working on bio-oil fractionation.

At the RE-CORD laboratories I perform chemical analysis on biomass and biofuels, especially gas chromatography (GC) (mass spectrometer (MS)/ flame ionisation detector (FID)) for specific molecular characterisations.

In order for me to learn more about GC/MS and GC/FID analysis, my group leader suggested that I join the BRISK project.

It was easy to apply. I just downloaded the application form from the BRISK website, filled it in with my details and then forwarded it to my manager for his approval before contacting my host institution, the European Bioenergy Research Institute (EBRI) at Aston University in Birmingham, the UK.

The EBRI staff helped me to book my flight and accommodation, which was a newly built Aston University apartment with its own kitchen, situated just two minutes away from the European Bioenergy Research Institute (EBRI) building.

EBRI group members, especially Dr Daniel Nowakowski, Surila Darbar and Dr Scott Banks, helped me from the first day I arrived. During my stay they showed me a lot of instruments and together we conducted the analysis.

Although my visit only lasted two weeks, during this time I was able to see several of EBRI's laboratories and instruments including its:

- GC/MS;
- GC/FID;



Figure 2: Giulia Lotti with Surila Darbar of EBRI.

Continued on next page

CASE STUDY

Knowledge exchange at EBRI



Figure 3: Left to right: Dr Scott Banks, Giulia Lotti and Surila Darbar outside the EBRI building.

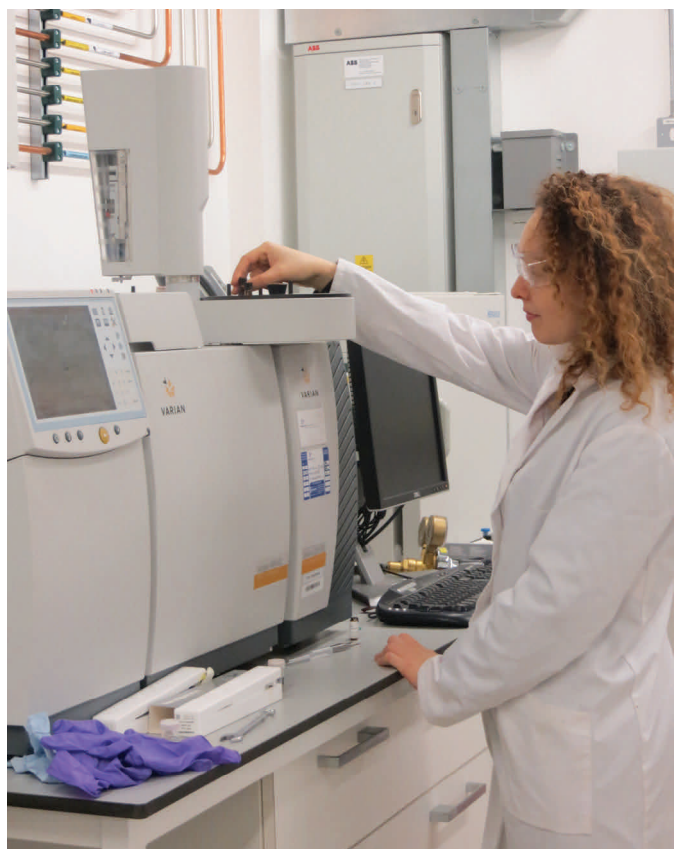


Figure 4: Working on GC/MS.

- Nuclear magnetic resonance (NMR);
- Pyrolysis plant;
- Gasifier plant.

At EBRI I was able to perform analysis to characterise my own samples from my laboratories in Italy.

It was also interesting for me to exchange ideas and experience with PhD students and research fellows from all over the world that are studying or working in EBRI. I really enjoyed my time here and would recommend the BRISK project to everybody who wants to share its scientific knowledge in biofuels. It was interesting to work in laboratories rich in instruments and technologies and to exchange experience with very professional staff members.

www.briskeu.com

“It was interesting to exchange ideas and experience with PhD students and research fellows from all over the world.”

The logo for Aston University Birmingham, featuring a red triangle above the text "Aston University Birmingham". Below this is the large green letters "EBRI" with "European Bioenergy Research Institute" written in smaller text underneath.

Contact

Tony Bridgwater
Aston University
E: a.v.bridgwater@aston.ac.uk
W: www.aston.ac.uk/ebri